

Let's Read Music

the music alphabet & the treble clef

The musical alphabet is the letters we use for naming pitches. The alphabet consists of seven letters: A, B, C, D, E, F, G. After "G" the alphabet repeats.

1. On the line below, write out the musical alphabet three times in a row:

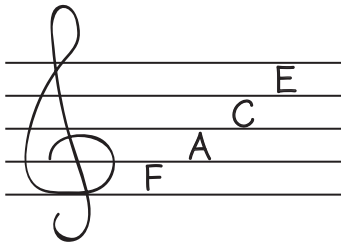
2. Now write it backwards three times in a row (G, F, E, D, C, B, A):

Memorize by saying it over and over again.
ABCDEF G ABCDEF G ABC...
GFEDCBAG FEDCBAGFE...

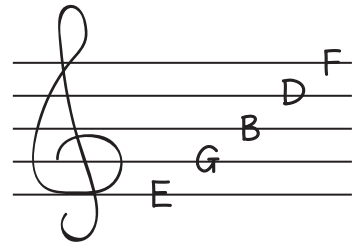


Each letter occupies a specific line or space on the treble clef.

The spaces spell out "FACE." Remember to start from the bottom.



The lines use the letters E-G-B-D-F

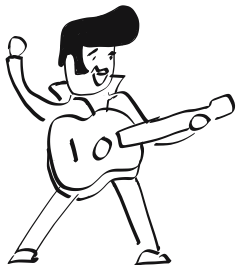


3. Your turn!
Draw a treble clef and place FACE on the staff

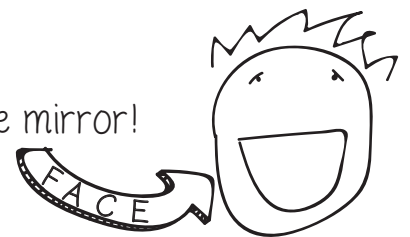
4. Your turn!
Draw a treble clef and place EGBDF on the staff

To help remember the letters that go on the lines, let's use a mnemonic device.

Elvis' Guitar Broke Down Friday



Remembering the spaces is easy... just look in the mirror!



Lastly, let's fill in the entire treble staff: 5. Your turn!

