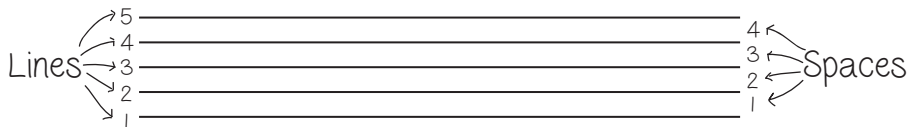
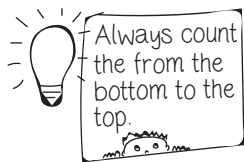


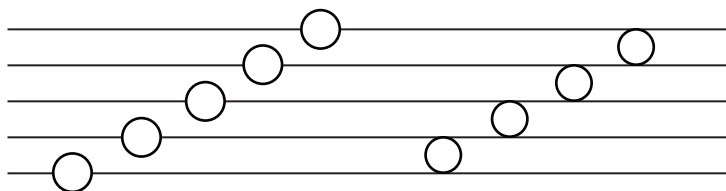
Let's Read Music

the music staff

Below is the **music staff**. The music staff consists of five parallel lines and four spaces.



Now, to the right, fill in the bubbles with the correct line numbers, then the correct space numbers.



Alright! Now let's practice with the exercises below.

Draw an "x" on line 3.

Draw an "x" in space 4.

Draw an "x" in space 1.

Draw an "o" on line 4.

Draw an "o" in space 2.

Draw an "o" on line 1.

Draw a 😊 on line 5.

Draw a 😊 in space 3.

Draw a 😊 on line 2.

How many lines are on a music staff? _____

How many spaces are on a music staff? _____

Always count lines and spaces from the _____ to the _____.