

# Mini Etudes #1

Rythmic Development Focus

John McAllister

Etude #1 2 3 4 5 6

The score is for a 6-measure etude in 4/4 time. The instruments and their parts are as follows:

- Flute:** Treble clef, key signature of two flats. Measures 1-2: quarter notes G4, A4. Measure 3: quarter notes G4, A4, B4. Measure 4: quarter notes G4, A4, B4, C5. Measure 5: quarter note G4, quarter rest. Measure 6: quarter notes G4, A4.
- Oboe & Mallets:** Treble clef, key signature of two flats. Measures 1-2: quarter notes G4, A4. Measure 3: quarter notes G4, A4, B4. Measure 4: quarter notes G4, A4, B4, C5. Measure 5: quarter note G4, quarter rest. Measure 6: quarter notes G4, A4.
- Clarinet in Bb:** Treble clef, key signature of one flat. Measures 1-2: quarter notes G4, A4. Measure 3: quarter notes G4, A4, B4. Measure 4: quarter notes G4, A4, B4, C5. Measure 5: quarter note G4, quarter rest. Measure 6: quarter notes G4, A4.
- Bass Clarinet in Bb:** Treble clef, key signature of one flat. Measures 1-2: quarter notes G4, A4. Measure 3: quarter notes G4, A4, B4. Measure 4: quarter notes G4, A4, B4, C5. Measure 5: quarter note G4, quarter rest. Measure 6: quarter notes G4, A4.
- Alto Saxophone:** Treble clef, key signature of one sharp. Measures 1-2: quarter notes G4, A4. Measure 3: quarter notes G4, A4, B4. Measure 4: quarter notes G4, A4, B4, C5. Measure 5: quarter note G4, quarter rest. Measure 6: quarter notes G4, A4.
- Tenor Saxophone:** Treble clef, key signature of one sharp. Measures 1-2: quarter notes G4, A4. Measure 3: quarter notes G4, A4, B4. Measure 4: quarter notes G4, A4, B4, C5. Measure 5: quarter note G4, quarter rest. Measure 6: quarter notes G4, A4.
- Baritone Saxophone:** Treble clef, key signature of one sharp. Measures 1-2: quarter notes G4, A4. Measure 3: quarter notes G4, A4, B4. Measure 4: quarter notes G4, A4, B4, C5. Measure 5: quarter note G4, quarter rest. Measure 6: quarter notes G4, A4.
- Trumpet in Bb:** Treble clef, key signature of one flat. Measures 1-2: quarter notes G4, A4. Measure 3: quarter notes G4, A4, B4. Measure 4: quarter notes G4, A4, B4, C5. Measure 5: quarter note G4, quarter rest. Measure 6: quarter notes G4, A4.
- Horn in F:** Treble clef, key signature of two flats. Measures 1-2: quarter notes G4, A4. Measure 3: quarter notes G4, A4, B4. Measure 4: quarter notes G4, A4, B4, C5. Measure 5: quarter note G4, quarter rest. Measure 6: quarter notes G4, A4.
- Trombone:** Bass clef, key signature of two flats. Measures 1-2: quarter notes G3, A3. Measure 3: quarter notes G3, A3, B3. Measure 4: quarter notes G3, A3, B3, C4. Measure 5: quarter note G3, quarter rest. Measure 6: quarter notes G3, A3.
- Tuba:** Bass clef, key signature of two flats. Measures 1-2: quarter notes G3, A3. Measure 3: quarter notes G3, A3, B3. Measure 4: quarter notes G3, A3, B3, C4. Measure 5: quarter note G3, quarter rest. Measure 6: quarter notes G3, A3.
- Snare/Bass:** Percussion clef, key signature of one sharp. Measures 1-2: quarter notes G4, A4 with 'z' above. Measure 3: quarter notes G4, A4, B4. Measure 4: quarter notes G4, A4, B4, C5. Measure 5: quarter note G4, quarter rest. Measure 6: quarter notes G4, A4.
- Aux.:** Percussion clef, key signature of one sharp. Measures 1-2: quarter notes G4, A4. Measure 3: quarter notes G4, A4, B4. Measure 4: quarter notes G4, A4, B4, C5. Measure 5: quarter note G4, quarter rest. Measure 6: quarter notes G4, A4.

7 8 9 Etude #2 10 11

Fl.  
Ob.  
Cl.  
B. Cl.  
Alto Sax.  
Ten. Sax.  
Bari. Sax.  
Tpt.  
Hn.  
Tbn.  
Tba.  
Perc.  
S. D.

Detailed description: This is a page of a musical score for a woodwind and brass ensemble. The page is numbered '2' in the top left corner. The score is divided into measures 7, 8, 9, 10, and 11. Measure 9 is the beginning of 'Etude #2'. The instruments listed on the left are Flute (Fl.), Oboe (Ob.), Clarinet (Cl.), Bass Clarinet (B. Cl.), Alto Saxophone (Alto Sax.), Tenor Saxophone (Ten. Sax.), Baritone Saxophone (Bari. Sax.), Trumpet (Tpt.), Horn (Hn.), Trombone (Tbn.), Tuba (Tba.), Percussion (Perc.), and Snare Drum (S. D.). The key signature changes from one flat (B-flat) in measures 7 and 8 to two flats (B-flat and E-flat) in measure 9, and remains there for measures 10 and 11. The time signature is not explicitly shown but appears to be 4/4 based on the notation. The percussion part includes a snare drum and a cymbal, with rhythmic patterns that change in measure 9. The woodwind and brass parts have various melodic and harmonic lines, with some instruments playing rests in certain measures.

12 13 14 15 16

Fl.

Ob.

Cl.

B. Cl.

Alto Sax.

Ten. Sax.

Bari. Sax.

Tpt.

Hn.

Tbn.

Tba.

Perc.

S. D.

**Etude #3**

17 18 19 20 21

Fl.

Ob.

Cl.

B. Cl.

Alto Sax.

Ten. Sax.

Bari. Sax.

Tpt.

Hn.

Tbn.

Tba.

Perc.

S. D.

22 23 24 25 Etude #4

Fl.

Ob.

Cl.

B. Cl.

Alto Sax.

Ten. Sax.

Bari. Sax.

Tpt.

Hn.

Tbn.

Tba.

Perc.

S. D.

Detailed description: This is a page of a musical score for a woodwind and brass ensemble. It covers measures 22 through 25 of a piece titled 'Etude #4'. The score is arranged in a system with 15 staves. The first seven staves are for woodwinds: Flute (Fl.), Oboe (Ob.), Clarinet (Cl.), Bass Clarinet (B. Cl.), Alto Saxophone (Alto Sax.), Tenor Saxophone (Ten. Sax.), and Baritone Saxophone (Bari. Sax.). The next four staves are for brass: Trumpet (Tpt.), Horn (Hn.), Trombone (Tbn.), and Tuba (Tba.). The final two staves are for Percussion (Perc.) and Snare Drum (S. D.). The music is written in a key signature of one flat (B-flat major or D minor) and a 4/4 time signature. Measures 22-24 show a melodic line in the woodwinds and brass, while measure 25 features a more rhythmic, repetitive pattern. The percussion parts provide a steady accompaniment throughout.

26 27 28 29

Fl.

Ob.

Cl.

B. Cl.

Alto Sax.

Ten. Sax.

Bari. Sax.

Tpt.

Hn.

Tbn.

Tba.

Perc.

S. D.

30 31 32

Fl.

Ob.

Cl.

B. Cl.

Alto Sax.

Ten. Sax.

Bari. Sax.

Tpt.

Hn.

Tbn.

Tba.

Perc.

S. D.

Detailed description: This is a page of a musical score for a band, covering measures 30, 31, and 32. The score is written for 13 instruments: Flute (Fl.), Oboe (Ob.), Clarinet (Cl.), Bass Clarinet (B. Cl.), Alto Saxophone (Alto Sax.), Tenor Saxophone (Ten. Sax.), Baritone Saxophone (Bari. Sax.), Trumpet (Tpt.), Horn (Hn.), Trombone (Tbn.), Tuba (Tba.), Percussion (Perc.), and Snare Drum (S. D.). The music is in a 4/4 time signature with a key signature of one flat (B-flat major or D minor). Measures 30 and 31 begin with a whole rest for the Flute and Oboe parts. The woodwinds and brass instruments play a rhythmic pattern of eighth and sixteenth notes. The percussion and snare drum parts provide a steady accompaniment. The page number '7' is located in the top right corner.

Flute

# Mini Etudes #1

Rythmic Development Focus

John McAllister

**Etude #1** 2 3 4 5 6 7

8 **Etude #2** 9 10 11

12 13 14 15 16

17 **Etude #3** 18 19 20

21 22 23 24

25 **Etude #4** 26 27 28

29 30 31 32



Oboe & Mallets

# Mini Etudes #1

Rythmic Development Focus

John McAllister

**Etude #1** 2 3 4 5 6 7

8 **Etude #2** 9 10 11

12 13 14 15 16

17 **Etude #3** 18 19 20

21 22 23 24

25 **Etude #4** 26 27 28

29 30 31 32

# Mini Etudes #1

## Rythmic Development Focus

Clarinet in B $\flat$

John McAllister

**Etude #1** 2 3 4 5 6 7



8 9 **Etude #2** 10 11 12



13 14 15 16



17 **Etude #3** 18 19 20



21 22 23 24



25 **Etude #4** 26 27 28



29 30



31 32



Bass Clarinet in B $\flat$

# Mini Etudes #1

Rhythmic Development Focus

John McAllister

**Etude #1** 2 3 4 5 6 7

8 9 **Etude #2** 10 11 12

13 14 15 16

17 **Etude #3** 18 19 20

21 22 23 24

25 **Etude #4** 26 27 28

29 30

31 32

Alto Saxophone

# Mini Etudes #1

Rhythmic Development Focus

John McAllister

Etude #1 2 3 4 5 6 7

8 9 Etude #2 10 11 12

13 14 15 16

17 Etude #3 18 19 20

21 22 23 24

25 Etude #4 26 27 28

29 30 31 32

Tenor Saxophone

# Mini Etudes #1

Rhythmic Development Focus

John McAllister

**Etude #1** 2 3 4 5 6 7

8 9 **Etude #2** 10 11 12

13 14 15 16

17 **Etude #3** 18 19 20

21 22 23 24

25 **Etude #4** 26 27 28

29 30 31 32

Baritone Saxophone

# Mini Etudes #1

Rhythmic Development Focus

John McAllister

Etude #1 2 3 4 5 6 7

8 9 Etude #2 10 11 12

13 14 15 16

17 Etude #3 18 19 20

21 22 23 24

25 Etude #4 26 27 28

29 30 31 32

# Mini Etudes #1

## Rhythmic Development Focus

Trumpet in B $\flat$

John McAllister

**Etude #1** 2 3 4 5 6 7



8 9 **Etude #2** 10 11 12



13 14 15 16



17 **Etude #3** 18 19 20



21 22 23 24



25 **Etude #4** 26 27 28



29 30



31 32



Horn in F

# Mini Etudes #1

Rythmic Development Focus

John McAllister

**Etude #1** 2 3 4 5 6 7

8 **Etude #2** 9 10 11 12

13 14 15 16

17 **Etude #3** 18 19 20

21 22 23 24

25 **Etude #4** 26 27 28

29 30 31 32



Trombone

# Mini Etudes #1

Rhythmic Development Focus

John McAllister

**Etude #1** 2 3 4 5 6 7



8 9 **Etude #2** 10 11



12 13 14 15 16



17 **Etude #3** 18 19 20



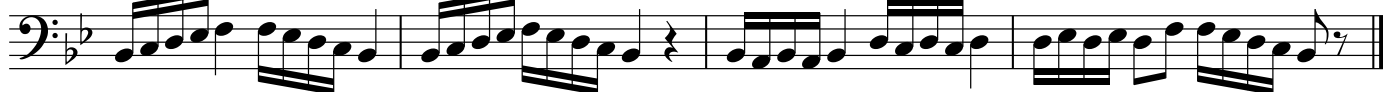
21 22 23 24



25 **Etude #4** 26 27 28



29 30 31 32



Tuba

# Mini Etudes #1

Rythmic Development Focus

John McAllister

**Etude #1** 2 3 4 5 6 7

Musical notation for Etude #1, measures 2 through 7. The piece is in 4/4 time with a key signature of two flats (B-flat and E-flat). The notation consists of a single bass clef staff with various rhythmic patterns including quarter notes, eighth notes, and rests.

8 9 **Etude #2** 10 11

Musical notation for Etude #2, measures 8 through 11. The key signature changes to three flats (B-flat, E-flat, and A-flat) starting at measure 9. The notation features eighth and sixteenth note patterns.

12 13 14 15 16

Musical notation for Etude #2, measures 12 through 16. The notation continues with eighth and sixteenth note patterns, ending with a double bar line.

17 **Etude #3** 18 19 20

Musical notation for Etude #3, measures 17 through 20. The notation includes eighth notes with accents and quarter notes.

21 22 23 24

Musical notation for Etude #3, measures 21 through 24. The notation features eighth notes with accents and quarter notes, ending with a double bar line.

25 **Etude #4** 26 27 28

Musical notation for Etude #4, measures 25 through 28. The notation consists of continuous sixteenth note patterns.

29 30

Musical notation for Etude #4, measures 29 through 30. The notation continues with sixteenth note patterns.

31 32

Musical notation for Etude #4, measures 31 through 32. The notation continues with sixteenth note patterns, ending with a double bar line.

Snare/Bass

# Mini Etudes #1

Rhythmic Development Focus

John McAllister

**Etude #1** 2 3 4 5 6 7

8 **Etude #2** 10 11 12

13 14 15 16

17 **Etude #3** 18 19 20

21 22 23 24

25 **Etude #4** 26 27 28

29 30 31 32

Aux.

# Mini Etudes #1

Rhythmic Development Focus

John McAllister

**Etude #1** 2 3 4 5 6 7

8 **Etude #2** 9 10 11 12

13 14 15 16

17 **Etude #3** 18 19 20

21 22 23 24

25 **Etude #4** 26 27 28

29 30 31 32