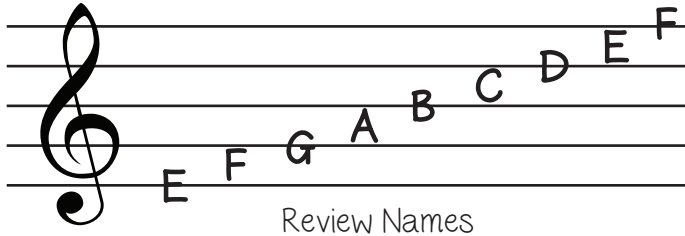


# Let's Read Music

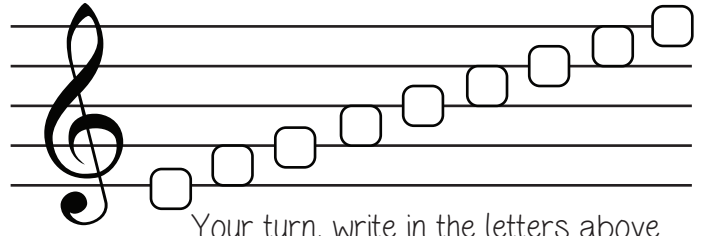
## ledger lines - treble clef

After we learn all of the note names on a music staff, we have to learn the note names that go beyond the music staff.

FIRST, let's review:



Review Names

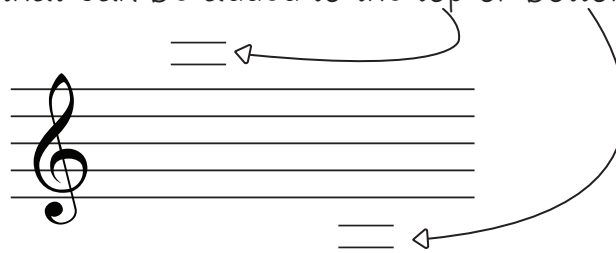


Your turn, write in the letters above



REMEMBER - Note names **alternate** between line and space through the musical alphabet.

In order to keep the alphabet going beyond the staff, we have to use **ledger lines**. Ledger lines are short lines that can be added to the top or bottom of a music staff.



Write in the missing letter names beneath the notes below. Remember, as the notes go higher, move forward through the alphabet. As the notes go lower, move backward.

