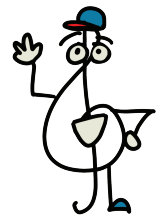




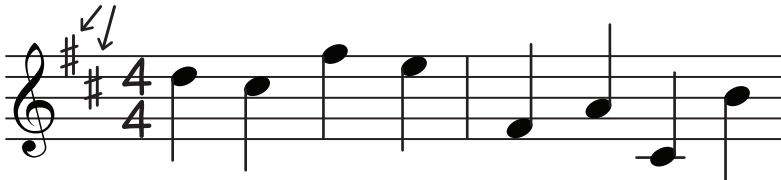
Let's Read Music



intro key signatures

A **key signature** contains a collection sharps or flats at the beginning of a piece of music. The sharps or flats in the **key signature** apply to every note in the music.

Example 1 There is a sharp on line 5 (F#) and a sharp in space 3 (C#).

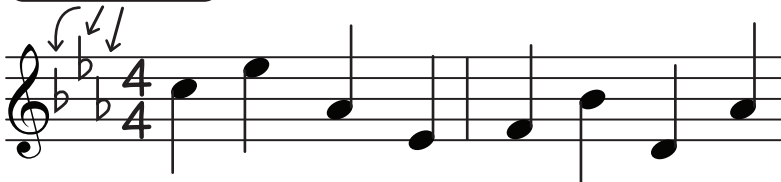


This means that EVERY F and EVERY C are sharp. No accidental is needed because it is in the **key signature**.

Without a key signature, it would look like this, using accidentals



Example 2 There are flats on line one (Bb), space four (Eb), and space 2 (Ab)



This means that EVERY F and EVERY C are sharp. No accidental is needed because it is in the **key signature**.

Without a key signature, it would look like this, using accidentals



① On the staff below, **circle** all of the notes affected by the **key signature**. (Hint: same key as Ex. 1)



② On the staff below, **circle** all of the notes affected by the **key signature**. (Hint: same key as Ex. 2)



③ A key signature is located at the _____ of a piece of music.

④ The sharps or flats in a key signature apply to _____ note in a piece.

⑤ Without a key signature, flat or sharp notes would need to be marked by _____.