

# Let's Read Music

## note types - whole, half, and quarter notes

The **line** or **space** where a music note is placed determines the **pitch**.  
The **note value** (or type of note) determines the **length** of the pitch being played.

---

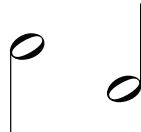
The first three types of notes to know are:

### Whole Note



Basically an oval.

### Half Note



Add a vertical line to a whole note called a **stem**.



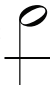


### Quarter Note



Add a vertical line (**stem**) a whole note AND fill the note in.

---

Now, let's practice drawing the notes!

1. Draw four whole notes next to the one provided:  \_\_\_\_\_
2. Draw four half notes with a upward stem:  \_\_\_\_\_
3. Draw four half notes with a downward stem:  \_\_\_\_\_
4. Draw four quarter notes with a upward stem:  \_\_\_\_\_
5. Draw four quarter notes with a downward stem:  \_\_\_\_\_
6. What is the vertical line that extends from half and quarter notes? \_\_\_\_\_
7. What is the difference between a half and quarter note? \_\_\_\_\_
8. Get some extra practice drawing any type of note on the line below:  
\_\_\_\_\_