

# Crush Your Scales - Volume I

(one line at a time)



McAllister

## Tuba

### 1) Ascending Bb Scale



### 2) Descending Bb Scale



### 3) Scale Segment



### 4) Lip Slurs



### 5) Airflow Study - Long Steady Air



### 6) Airflow Study #2



### 7) Slur 2/Tongue 2



### 8) Bb Scale



### 9) Ab Scale



### 10) Slur 2/Tongue 2



### 11) Ab Scale with Eighths



12) G Scale



13) Slur 2/ Tongue 2



14) G Scale With Eighths



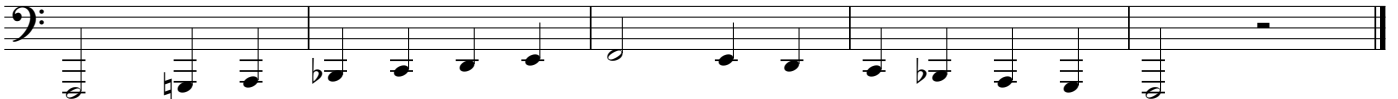
15) Downward Chromatic



16) Lower Downward Chromatic



17) F Scale



18) Airflow Study #3



raise tongue and blow faster air for higher notes      Air      Air

19) C Scale



20) Slur 2/ Tongue 2



21) C Scale with Eighths



22) Lip Slurs



Use consistent air....

23) Working Higher



24) Db Scale



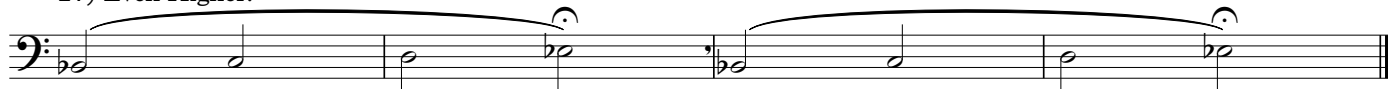
## 25) Slur 2 / Tongue 2



## 26) Db Scale with Eighths



## 27) Even Higher!



Say "ee" Use fast air, Open Throat!!

## 28) Eb Scale



## 29) Slur 2 / Tongue 2



## 30) Eb Scale with Eighths



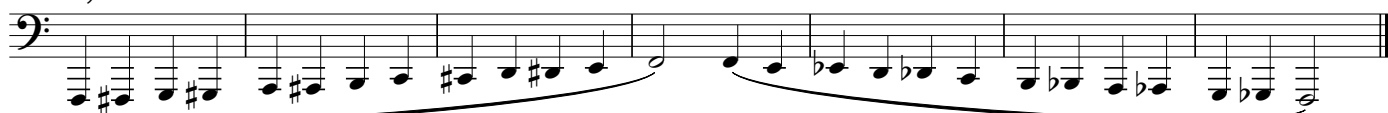
## 31) Slur 2 / Tongue 2 (on the F Scale)



## 32) F Scale



## 33) Low Chromatics



sharps are used for ascending chromatics - flats are used for descending chromatics - why do you think this is?

## 34) Low Chromatics in Eighths



## 35) Climbing Higher!



## 36) Put it all together!



## 37) Continuing upward...



## 38) To the TOP!



## 39) From F to F



## 40) Chromatic Scale All Together



## 41) G Scale



## 42) Ab Scale



## 43) Bb Scale



## 44) C Scale



## 45) Db Scale



## 46) Eb Scale



## 47) F Scale

