

Cinematic Scales

3 Note Patterns

John McAllister

Musical score for Cinematic Scales, 3 Note Patterns, measures 1-8. The score is in 4/4 time and features five staves: C (Trumpet), Bb (Trumpet), Eb (Trumpet), F (Flute), and BC (Baritone/Cornet). The Tba (Tuba) part is also present. The key signature is one flat (Bb). The melody in the C staff consists of quarter notes: C4, D4, E4, F4, G4, A4, Bb4, C5. The accompaniment in the other staves follows a similar pattern, with some staves playing chords or octaves.

Musical score for Cinematic Scales, 3 Note Patterns, measures 9-16. The score continues from measure 9. The key signature changes to two flats (Bb, Eb). The melody in the C staff consists of quarter notes: Bb4, C5, D5, Eb5, F5, G5, Ab5, Bb5. The accompaniment in the other staves follows a similar pattern, with some staves playing chords or octaves.

17

C
Bb
Eb
F
BC
Tba

This musical system covers measures 17 through 24. It features six staves: C (Cornet), Bb (Bassoon), Eb (Euphonium), F (Flugelhorn), BC (Baritone/Cornet), and Tba (Tuba). The music is in a key with two flats (Bb major or D minor) and a 4/4 time signature. Measures 17-20 show a rhythmic pattern of eighth notes and quarter notes. Measures 21-24 feature a change in the C and BC parts, with the C part playing a half note followed by a quarter note, and the BC part playing a half note followed by a quarter note. The Bb, Eb, F, and Tba parts continue with their respective rhythmic patterns.

25

C
Bb
Eb
F
BC
Tba

This musical system covers measures 25 through 32. It features the same six staves as the previous system. Measures 25-28 continue the rhythmic pattern from the previous system. Measures 29-32 feature a change in the C and BC parts, with the C part playing a half note followed by a quarter note, and the BC part playing a half note followed by a quarter note. The Bb, Eb, F, and Tba parts continue with their respective rhythmic patterns.

33

C

Bb

Eb

F

BC

Tba

(A# = Bb)

(E# = F)

Detailed description: This block contains the musical score for measures 33 through 40. It features six staves for instruments: C (Cornet), Bb (Bassoon), Eb (Euphonium), F (Flute), BC (Baritone/Cornet), and Tba (Tuba). The music is in 2/4 time with a key signature of one flat (Bb). The C, Bb, and BC staves have a treble clef, while the Eb, F, and Tba staves have a bass clef. The Eb staff includes the annotation (E# = F) and the Bb staff includes (A# = Bb). The score shows a melodic line in the C part and a harmonic accompaniment in the other parts. Measures 33-36 show a melodic phrase, and measures 37-40 show a more complex harmonic texture with some rests.

41

C

Bb

Eb

F

BC

Tba

Detailed description: This block contains the musical score for measures 41 through 48. It features the same six instruments as the previous block: C, Bb, Eb, F, BC, and Tba. The music continues in 2/4 time with a key signature of one flat. The notation is similar to the previous block, showing a melodic line in the C part and a harmonic accompaniment. Measures 41-44 show a melodic phrase, and measures 45-48 show a more complex harmonic texture with some rests.

C

Cinematic Scales

3 Note Patterns

John McAllister

2 3 4 5 6 7

8 9 10 11 12 13 14

15 16 17 18 19 20 21

22 23 24 25 26 27 28

29 30 31 32 33 34 35

36 37 38 39 40 41 42

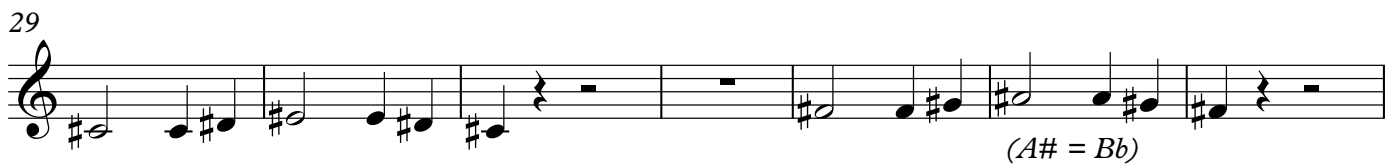
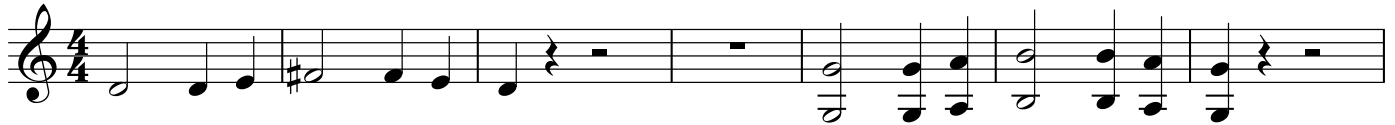
43 44 45 46 47 48

Cinematic Scales

3 Note Patterns

B \flat

John McAllister



(A# = B \flat)

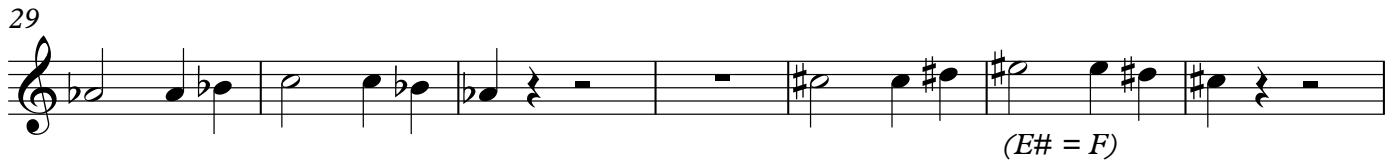


Cinematic Scales

3 Note Patterns

E \flat

John McAllister

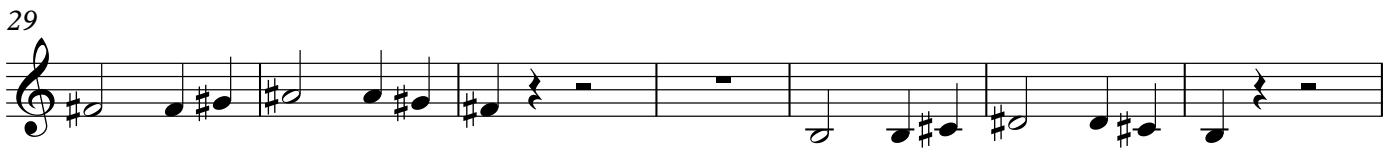
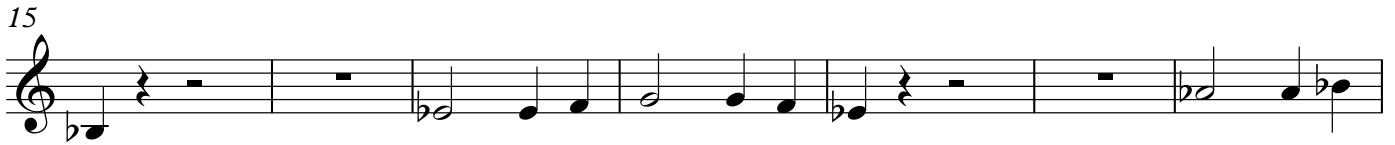


F

Cinematic Scales

3 Note Patterns

John McAllister

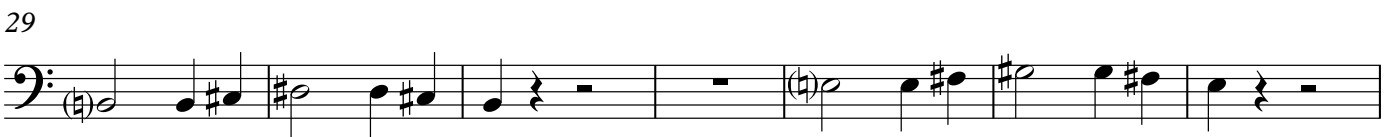
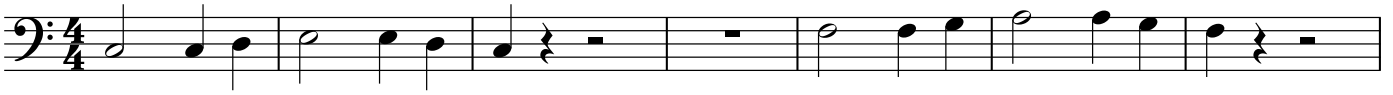


BC

Cinematic Scales

3 Note Patterns

John McAllister



Cinematic Scales

Tba

3 Note Patterns

John McAllister



8



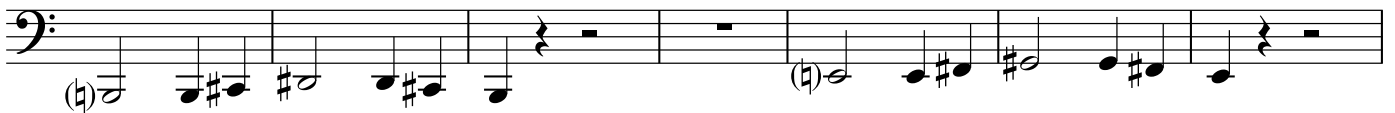
15



22



29



36



43

